

**Seward School**  
**Winnebago CUSD 323**  
**Seward, ILLINOIS**



**ILLINOIS**  
**SCHOOL**  
**REPORT**  
**CARD**

**GRADES : PK K**

State and federal laws require public school districts to release report cards to the public each year.

Starting in 2009, charter school information is included in district statistics.

**STUDENTS**

RACIAL/ETHNIC BACKGROUND AND OTHER INFORMATION															
	White	Black	Hispanic	Asian	Native Hawaiian /Pacific Islander	American Indian	Two or More Races	Percent Low-Income	Percent Limited-English-Proficient	Percent IEP	High Sch. Dropout Rate	Chronic Truancy Rate	Mobility Rate	Attendance Rate	Total Enrollment
<b>School</b>	94.2	0.0	4.5	0.0	0.0	0.6	0.6	34.2	6.5	23.2		0.0	5.1	94.4	155
<b>District</b>	91.1	3.0	3.8	0.7	0.1	0.9	0.4	22.0	3.6	13.9		0.5	7.8	95.6	1,638
<b>State</b>	51.4	18.3	23.0	4.1	0.1	0.3	2.8	48.1	8.8	14.0		3.2	12.8	94.0	2,074,806

**Low-income** students come from families receiving public aid; live in institutions for neglected or delinquent children; are supported in foster homes with public funds; or are eligible to receive free or reduced-price lunches.

**IEP** Students are those students eligible to receive special education services.

**Limited-English-proficient** students are those students eligible for transitional bilingual programs.

**Mobility rate** is based on the number of times students enroll in or leave a school during the school year.

**Chronic truants** are students who are absent from school without valid cause for 18 or more of the last 180 school days.

**Total Enrollment** is based on Home School.

**INSTRUCTIONAL SETTING**

PARENTAL CONTACT*		STUDENT-TO-STAFF RATIOS			
	Percent	Pupil-Teacher Elementary	Pupil-Teacher Secondary	Pupil-Certified Staff	Pupil-Administrator
<b>School</b>	100.0	--	--	--	--
<b>District</b>	96.0	16.3	15.1	12.7	183.0
<b>State</b>	96.0	18.8	18.9	13.6	211.3

\* Parental contact includes parent-teacher conferences, parental visits to school, school visits to home, telephone conversations, and written correspondence.

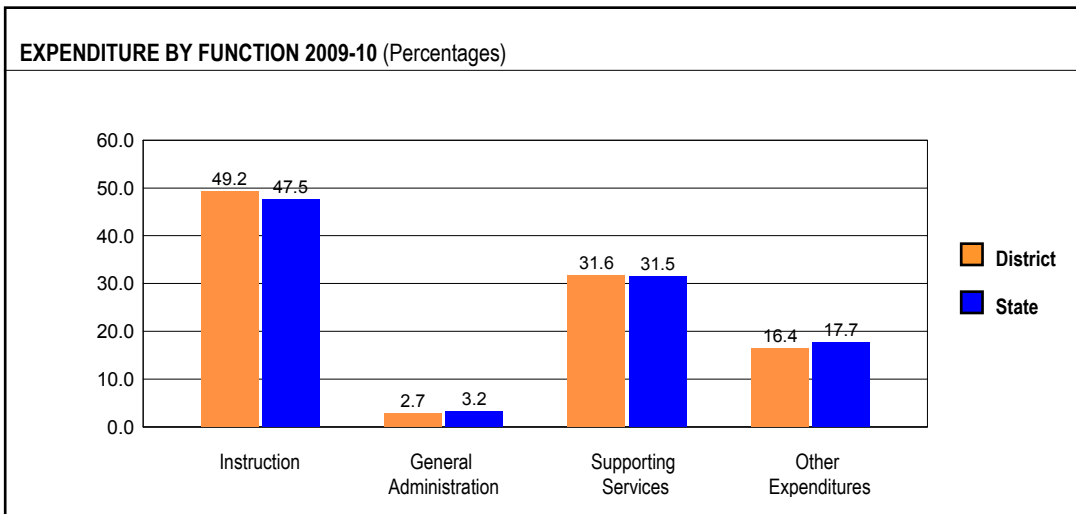
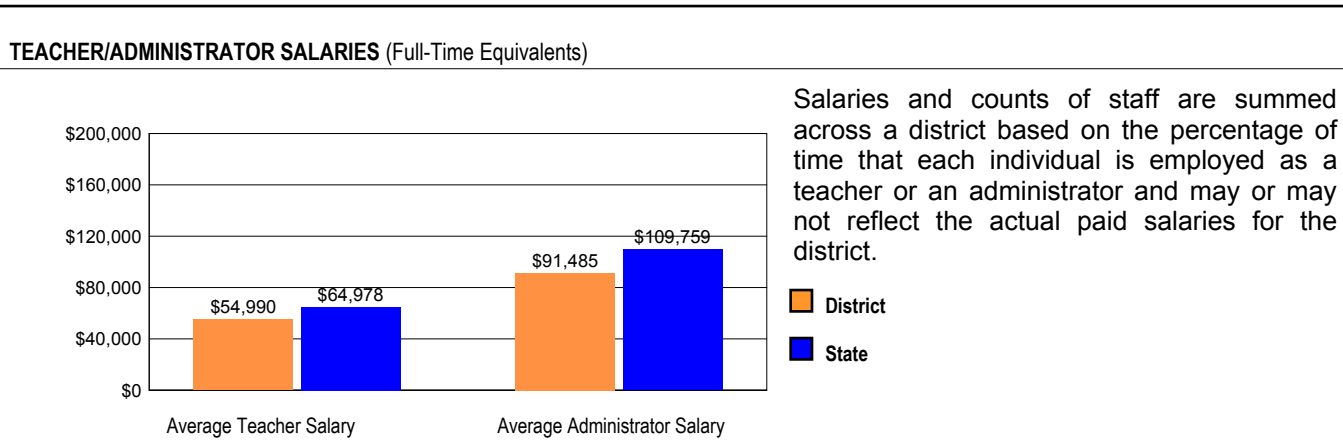
AVERAGE CLASS SIZE (as of the first school day in May)										
Grades	K	1	2	3	4	5	6	7	8	9 - 12
<b>School</b>	19.2									
<b>District</b>	19.2									
<b>State</b>	20.9									

TEACHER INFORMATION (Full-Time Equivalents)												
	White	Black	Hispanic	Asian	Native Hawaiian/Pacific Islander	American Indian	Two or More Races	Unknown	Male	Female	Total Number	
<b>District</b>	99.1	0.0	0.9	0.0	0.0	0.0	0.0	0.0	28.9	71.1	114	
<b>State</b>	82.4	6.1	5.0	1.2	0.1	0.1	0.7	4.3	23.1	76.9	128,262	

TEACHER INFORMATION ( Continued )					
	Average Teaching Experience (Years)	% of Teachers with Bachelor's Degrees	% of Teachers with Master's & Above	% of Teachers with Emergency or Provisional Credentials	% of Classes Not Taught by Highly Qualified Teachers
School	--	--	--	0.0	0.0
District	12.2	34.2	65.8	0.0	0.0
State	13.2	39.5	60.4	0.6	0.8

Some teacher/administrator data are not collected at the school level.

## SCHOOL DISTRICT FINANCES



REVENUE BY SOURCE 2009-10				EXPENDITURE BY FUND 2009-10			
	District	District %	State %		District	District %	State %
Local Property Taxes	\$9,592,412	53.5	58.9	Education	\$13,157,081	72.4	72.9
Other Local Funding	\$1,292,007	7.2	6.4	Operations & Maintenance	\$1,777,798	9.8	6.0
General State Aid	\$3,983,934	22.2	14.9	Transportation	\$1,360,584	7.5	3.8
Other State Funding	\$1,338,172	7.5	7.5	Debt Service	\$1,031,700	5.7	7.2
Federal Funding	\$1,731,075	9.7	12.4	Tort	\$157,452	0.9	1.2
TOTAL	\$17,937,600			Municipal Retirement/ Social Security	\$508,160	2.8	1.9
				Fire Prevention & Safety	\$176,168	1.0	0.7
				Site & Construction/ Capital Improvement	\$0	0.0	6.4
				TOTAL	\$18,168,943		

OTHER FINANCIAL INDICATORS				
	2008 Equalized Assessed Valuation per Pupil	2008 Total School Tax Rate per \$100	2009-10 Instructional Expenditure per Pupil	2009-10 Operating Expenditure per Pupil
District	\$106,268	5.62	\$5,837	\$9,987
State	**	**	\$6,773	\$11,537

\*\* Due to the way Illinois school districts are configured, state averages for equalized assessed valuation per pupil and total school tax rate per \$100 are not provided.

**Equalized assessed valuation** includes all computed property values upon which a district's local tax rate is calculated.

**Total school tax rate** is a district's total tax rate as it appears on local property tax bills.

**Instructional expenditure per pupil** includes the direct costs of teaching pupils or the interaction between teachers and pupils.

**Operating expenditure per pupil** includes the gross operating cost of a school district excluding summer school, adult education, bond principal retired, and capital expenditures.