

**Seward School**  
**Winnebago CUSD 323**  
**Seward, ILLINOIS**



**ILLINOIS**  
**SCHOOL**  
**REPORT**  
**CARD**

**GRADES : PK K**

State and federal laws require public school districts to release report cards to the public each year.

Starting in 2009, charter school information is included in district statistics.

**STUDENTS**

RACIAL/ETHNIC BACKGROUND AND OTHER INFORMATION														
	White	Black	Hispanic	Asian/ Pacific Islander	Native American	Multi racial /Ethnic	Percent Low- Income	Percent Limited- English- Proficient	Percent IEP	High Sch. Dropout Rate	Chronic Truancy Rate	Mobility Rate	Attendance Rate	Total Enrollment
<b>School</b>	94.9	1.3	1.3	0.0	0.6	1.9	20.9	3.8	19.0		0.0	5.2	94.1	158
<b>District</b>	91.1	2.5	3.7	0.9	0.7	1.0	17.1	3.1	11.5		0.6	8.6	95.6	1,628
<b>State</b>	52.8	18.8	21.1	4.2	0.2	2.9	45.4	7.6	13.1		3.6	13.0	93.9	2,064,312

**Low-income** students come from families receiving public aid; live in institutions for neglected or delinquent children; are supported in foster homes with public funds; or are eligible to receive free or reduced-price lunches.

**IEP** Students are those students eligible to receive special education services.

**Limited-English-proficient** students are those students eligible for transitional bilingual programs.

**Mobility rate** is based on the number of times students enroll in or leave a school during the school year.

**Chronic truants** are students who are absent from school without valid cause for 18 or more of the last 180 school days.

**INSTRUCTIONAL SETTING**

PARENTAL CONTACT*		STUDENT-TO-STAFF RATIOS			
	Percent	Pupil- Teacher Elementary	Pupil- Teacher Secondary	Pupil- Certified Staff	Pupil- Administrator
<b>School</b>	100.0	--	--	--	--
<b>District</b>	96.4	16.5	13.6	12.2	193.3
<b>State</b>	96.2	18.2	18.2	13.3	203.8

\* Parental contact includes parent-teacher conferences, parental visits to school, school visits to home, telephone conversations, and written correspondence.

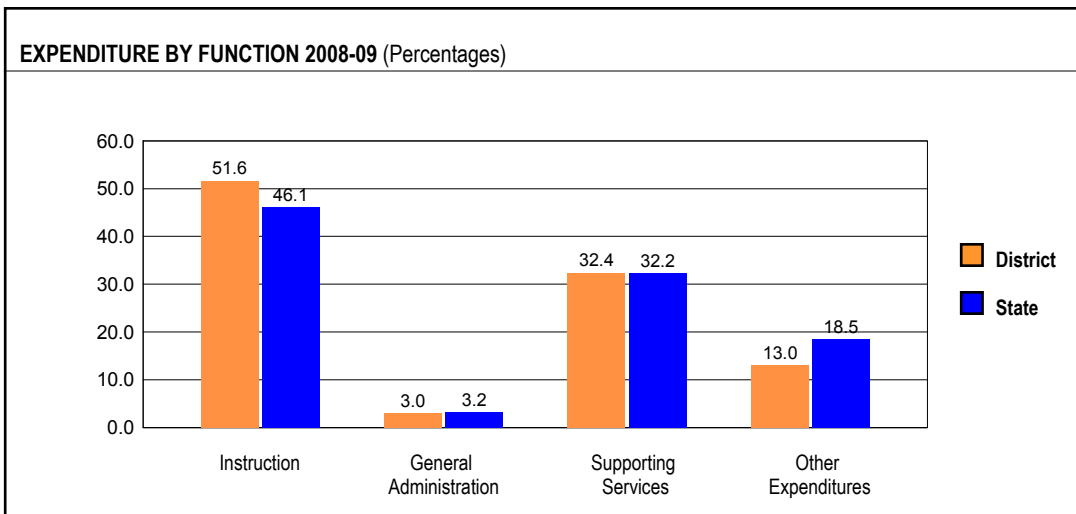
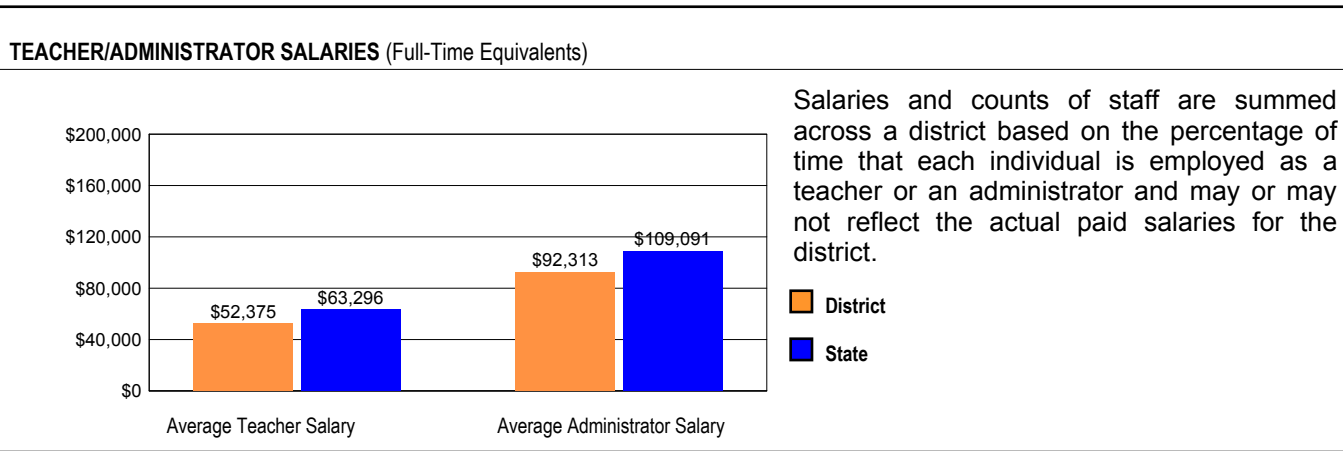
AVERAGE CLASS SIZE (as of the first school day in May)										
Grades	K	1	2	3	4	5	6	7	8	9 - 12
<b>School</b>	21.2									
<b>District</b>	21.2									
<b>State</b>	20.7									

TEACHER INFORMATION (Full-Time Equivalents)								
	White	Black	Hispanic	Asian/ Pacific Islander	Native American	Male	Female	Total Number
<b>District</b>	98.3	0.9	0.9	0.0	0.0	30.0	70.0	117
<b>State</b>	85.2	8.1	5.2	1.4	0.2	23.0	77.0	132,502

TEACHER INFORMATION (Continued)					
	Average Teaching Experience (Years)	% of Teachers with Bachelor's Degrees	% of Teachers with Master's & Above	% of Teachers with Emergency or Provisional Credentials	% of Classes Not Taught by Highly Qualified Teachers
School	--	--	--	0.0	0.0
District	11.9	34.4	65.6	1.0	0.0
State	12.7	42.2	57.4	0.5	0.7

Some teacher/administrator data are not collected at the school level.

## SCHOOL DISTRICT FINANCES



REVENUE BY SOURCE 2008-09				EXPENDITURE BY FUND 2008-09			
	District	District %	State %		District	District %	State %
Local Property Taxes	\$9,300,261	53.6	58.4	Education	\$12,932,281	74.4	69.6
Other Local Funding	\$1,142,152	6.6	6.9	Operations & Maintenance	\$1,703,262	9.8	7.9
General State Aid	\$4,091,320	23.6	14.5	Transportation	\$1,022,772	5.9	3.8
Other State Funding	\$1,161,375	6.7	8.3	Debt Service	\$980,786	5.6	7.0
Federal Funding	\$1,651,197	9.5	11.9	Tort	\$222,673	1.3	1.2
TOTAL	\$17,346,305			Municipal Retirement/ Social Security	\$471,668	2.7	1.8
				Fire Prevention & Safety	\$59,786	0.3	0.8
				Site & Construction/ Capital Improvement	\$0	0.0	7.9
				TOTAL	\$17,393,228		

OTHER FINANCIAL INDICATORS				
	2007 Equalized Assessed Valuation per Pupil	2007 Total School Tax Rate per \$100	2008-09 Instructional Expenditure per Pupil	2008-09 Operating Expenditure per Pupil
District	\$98,087	5.81	\$5,784	\$9,946
State	**	**	\$6,483	\$11,197

\*\* Due to the way Illinois school districts are configured, state averages for equalized assessed valuation per pupil and total school tax rate per \$100 are not provided.

**Equalized assessed valuation** includes all computed property values upon which a district's local tax rate is calculated.

**Total school tax rate** is a district's total tax rate as it appears on local property tax bills.

**Instructional expenditure per pupil** includes the direct costs of teaching pupils or the interaction between teachers and pupils.

**Operating expenditure per pupil** includes the gross operating cost of a school district excluding summer school, adult education, bond principal retired, and capital expenditures.